



# BROOKHOLLOW BUSINESS CENTER

---

1077 Central Parkway South • San Antonio, TX 78232

BUILDING A - SUITE 800



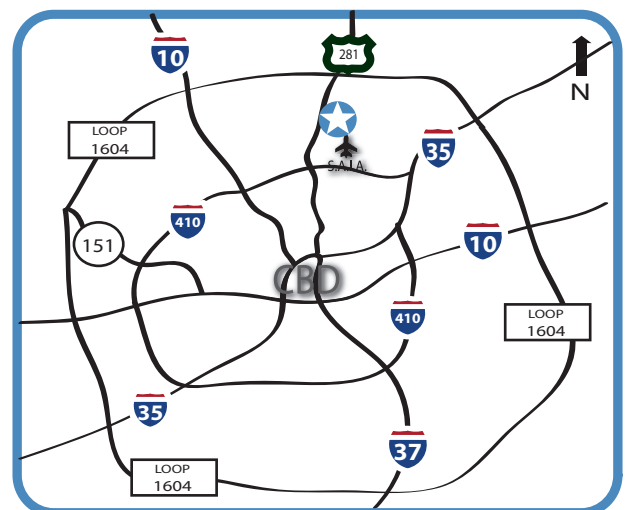
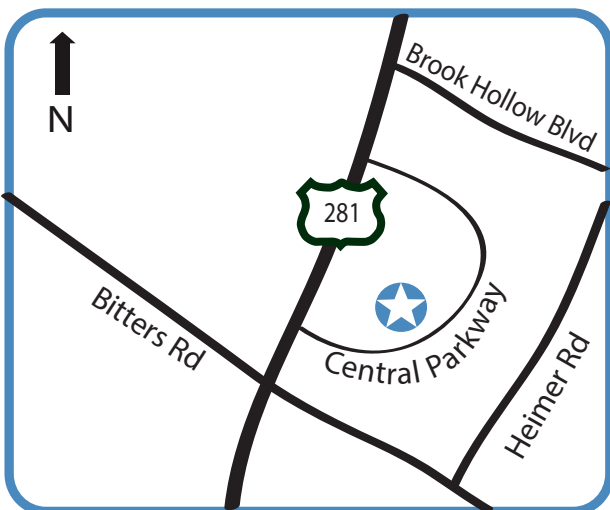
WORTH  
& ASSOCIATES

# BROOKHOLLOW BUSINESS CENTER

1077 Central Parkway South • San Antonio, TX 78232

## PROPERTY INFORMATION

- Brookhollow Business Center is a Three Building Single Story Flex Office Building Complex with 185,222 SF
- **Suite 800: 7,977 SF Available For Lease**
  - Office - 4,851 SF
  - A/C Warehouse - 2,384 SF
  - Non A/C Warehouse - 742 SF
- Excellent Ingress/Egress to U.S. 281
- Great North Central Location within Close Proximity to San Antonio International Airport, U.S. 281 and Wurzbach Highway
- Secure After-Hours Gate Access
- Close to Many Restaurants, Hotels, Retail and other Area amenities



CONTACT: Rob Gish  
210.805.3370  
rob@worthsa.com

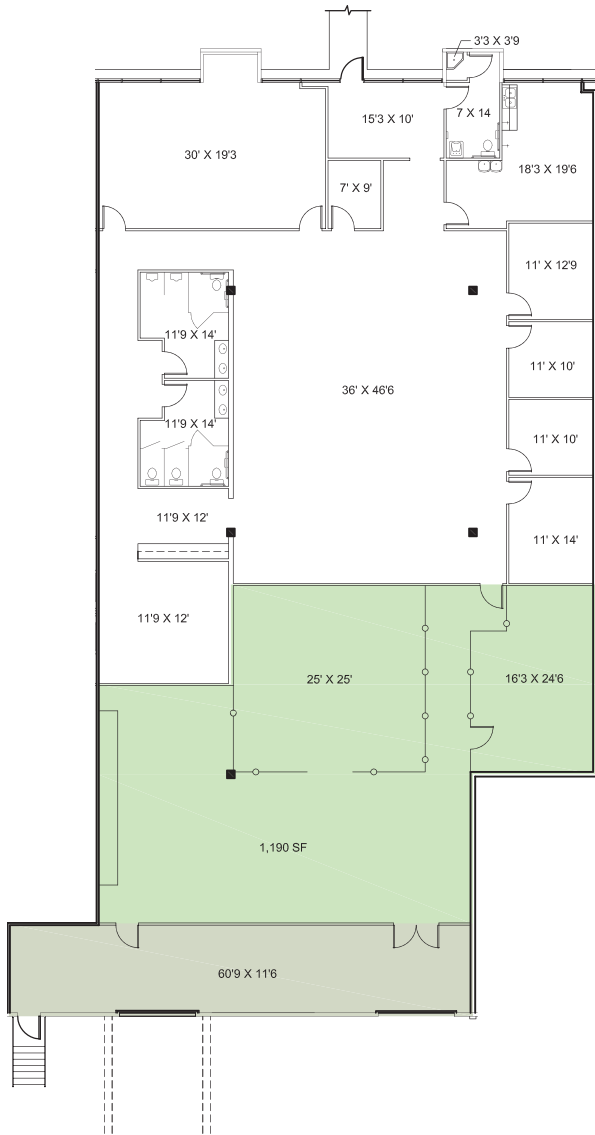


# BROOKHOLLOW BUSINESS CENTER

1077 Central Parkway South • San Antonio, TX 78232

## SPACE PLAN

### SUITE 800A: 7,977SF



LOCATION PLAN



- NON A/C STORAGE
- A/C STORAGE

<b>SUITE 800</b>	
OFFICE:	4,851 SF
CONDITIONED STORAGE:	2,384 SF
UNCONDITIONED STORAGE:	742 SF
<b>TOTAL:</b>	<b>7,977 SF</b>





# BROOKHOLLOW BUSINESS CENTER

1077 Central Parkway South • San Antonio, TX 78232

## SPACE PHOTOS



CONTACT: Rob Gish  
210.805.3370  
rob@worthsa.com





# BROOKHOLLOW BUSINESS CENTER

1077 Central Parkway South • San Antonio, TX 78232

## PROJECT PHOTOS



CONTACT: Rob Gish  
210.805.3370  
rob@worthsa.com

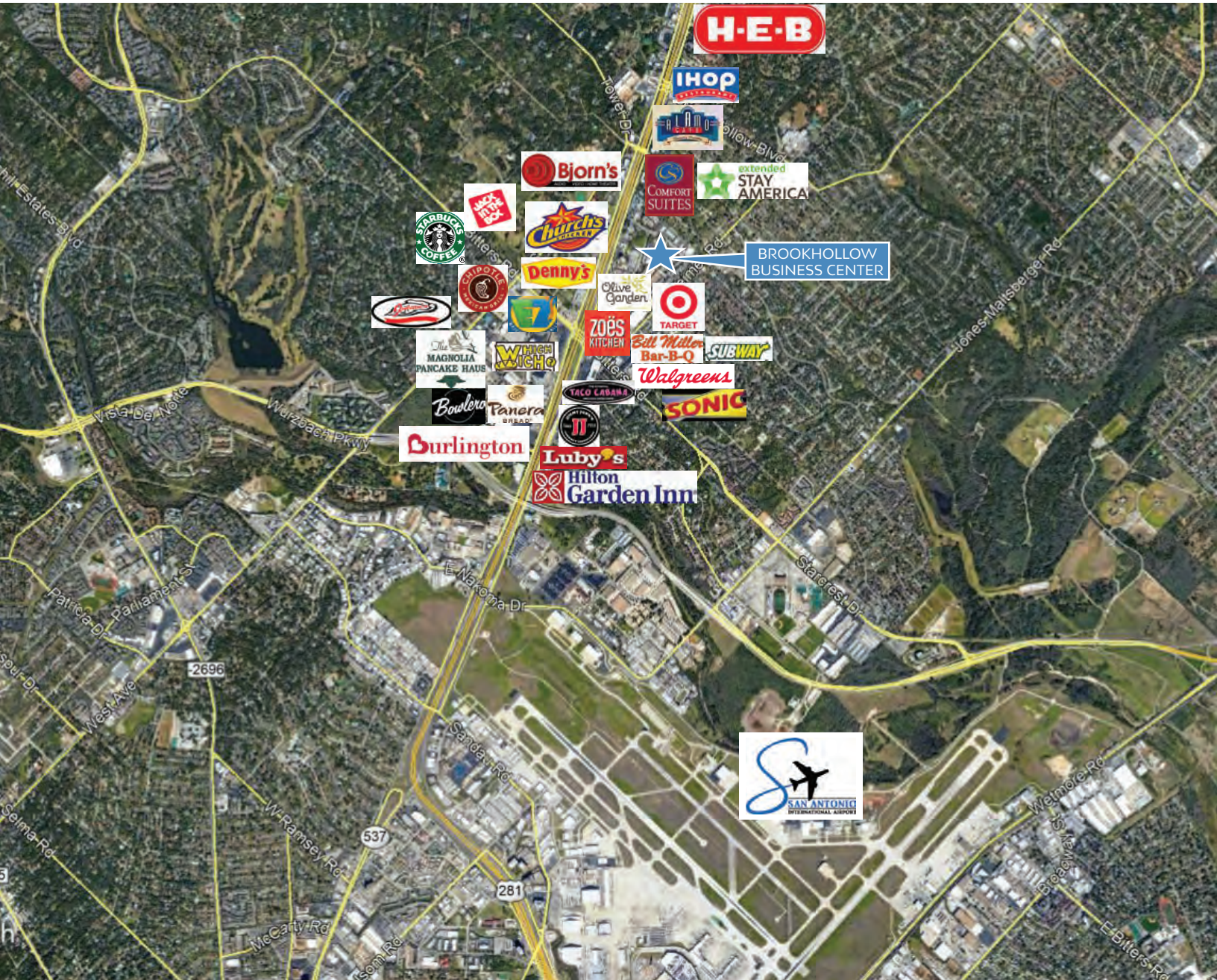




# BROOKHOLLOW BUSINESS CENTER

1077 Central Parkway South • San Antonio, TX 78232

## AMENITY MAP



**WORTH**  
& ASSOCIATES

CONTACT: Rob Gish  
210.805.3370  
robg@worthsa.com

7373 Broadway, Suite 201 • San Antonio, TX 78209  
210.822.5220 • Fax 210.822.5224 • www.worthsa.com