

EXCELLENT 25,189 SF ENDCAP OFFICE SPACE AVAILABLE



UNIVERSITY PARK BUSINESS CENTER

5750 Northwest Parkway • San Antonio, TX 78249

BUILDING C
SUITE 100



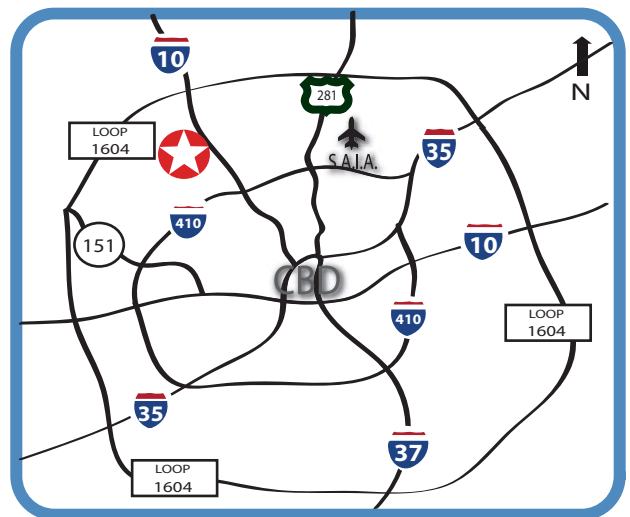
WORTH
& ASSOCIATES

UNIVERSITY PARK BUSINESS CENTER

5750 Northwest Parkway • San Antonio, TX 78249

PROPERTY INFORMATION

- University Business park is a Three Building Single Story Flex Office Park Totaling 150,372 SF
- **Building C: Suite 100 - 25,189 SF of Flex Office Space Available**
- 100% Office Use
- Excellent Endcap Space for Call Center or Back Office User
- 5/1000 Parking Ratio
- Hill Country Feel with Native Oak Trees
- Convenient Access to IH 10 East and West with No Traffic Lights
- Secure After Hours Gate Access
- Jogging Trail and Outdoor Picnic Areas

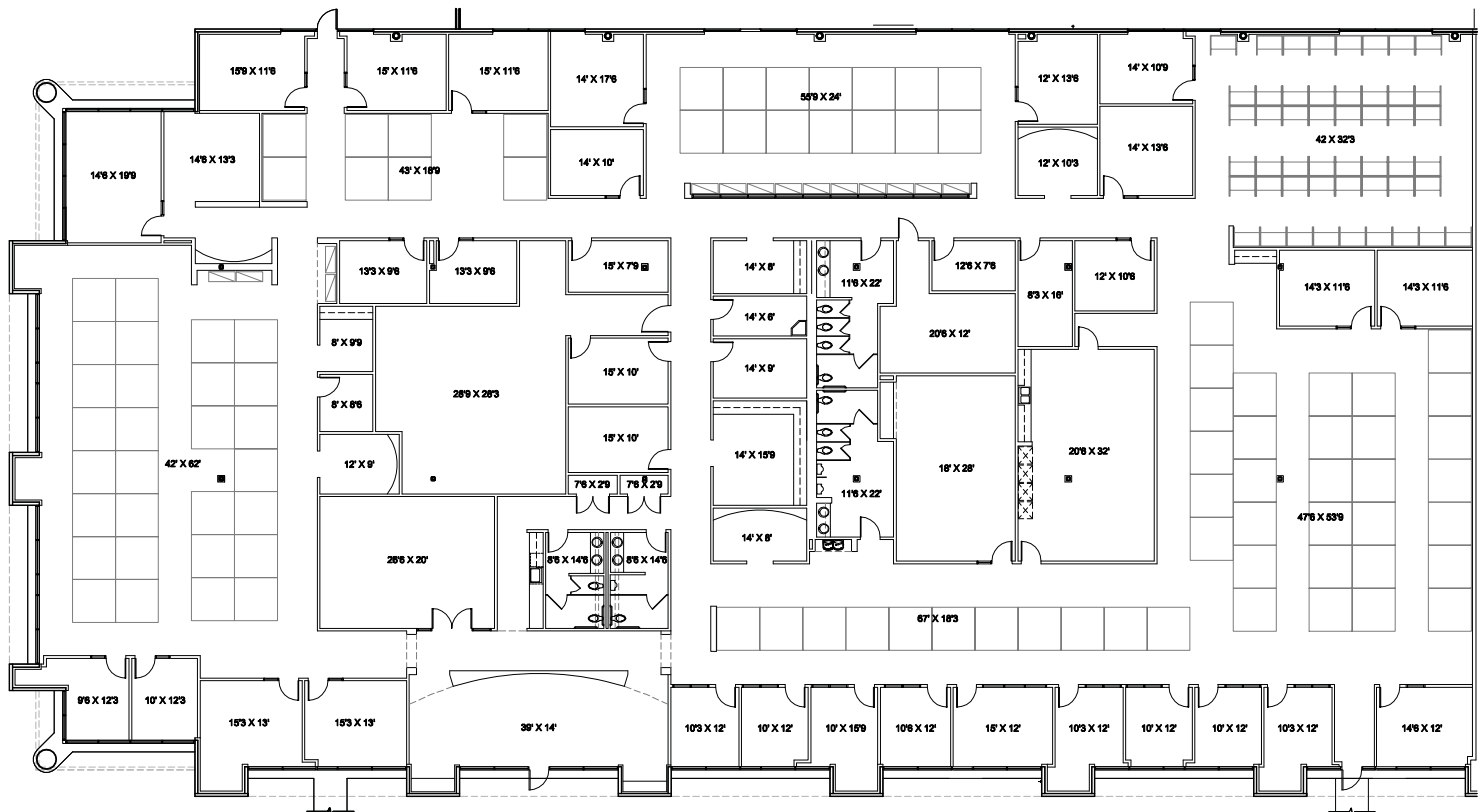


SPACE PLAN

BUILDING C: SUITE 100 - 25,189 SF



TRUE
NORTH



UNIVERSITY PARK BUSINESS CENTER

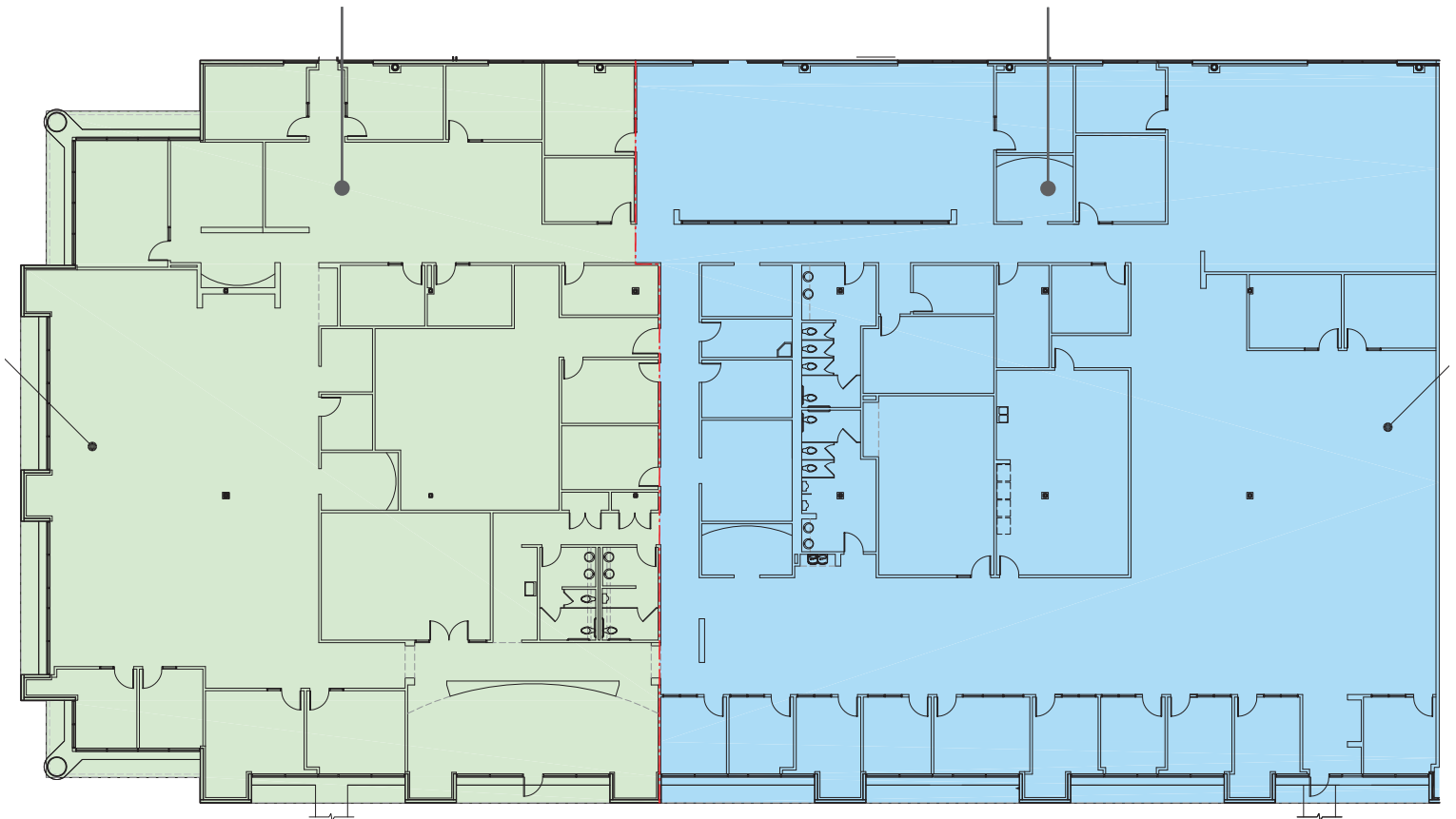
5750 Northwest Parkway • San Antonio, TX 78249

DEMISED SPACE PLAN

BUILDING C: SUITE 100 - 25,189 SF

SUITE 100
10,971 SF

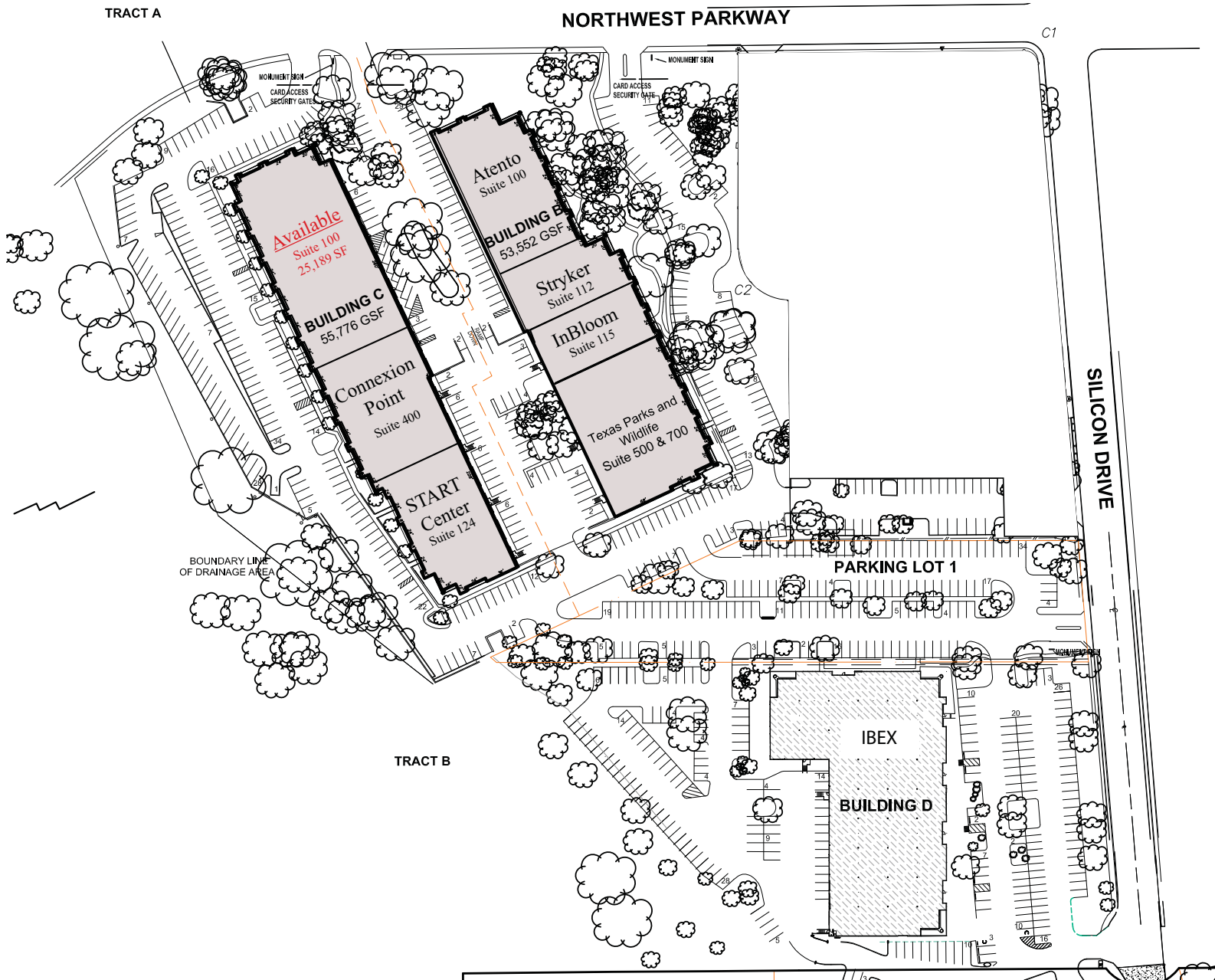
SUITE 111
14,220 SF



UNIVERSITY PARK BUSINESS CENTER

5750 Northwest Parkway • San Antonio, TX 78249

SITE PLAN



CONTACT: Rick Littleton
210.805.3380
rickl@worthsa.com

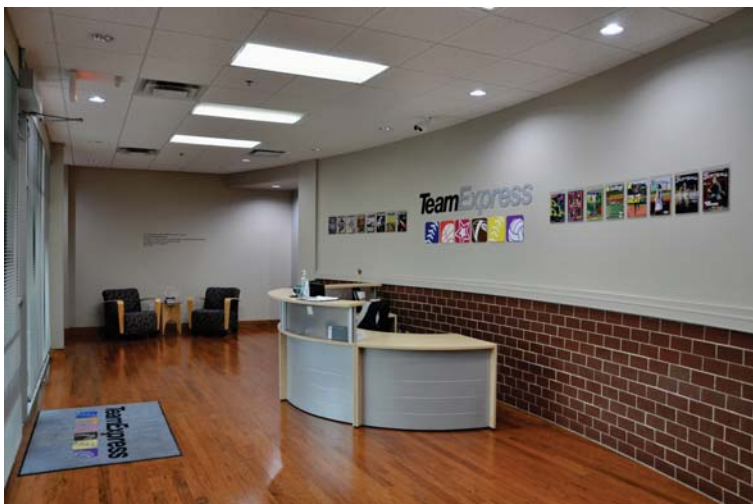
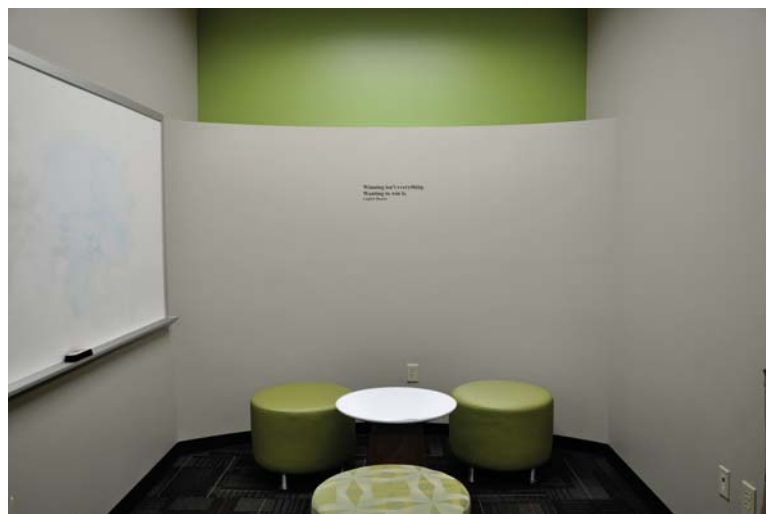
Rob Gish
210.805.3370
rob@worthsa.com



UNIVERSITY PARK BUSINESS CENTER

5750 Northwest • San Antonio, TX 78249

PHOTOS



CONTACT: Rick Littleton
210.805.3380
rickl@worthsa.com

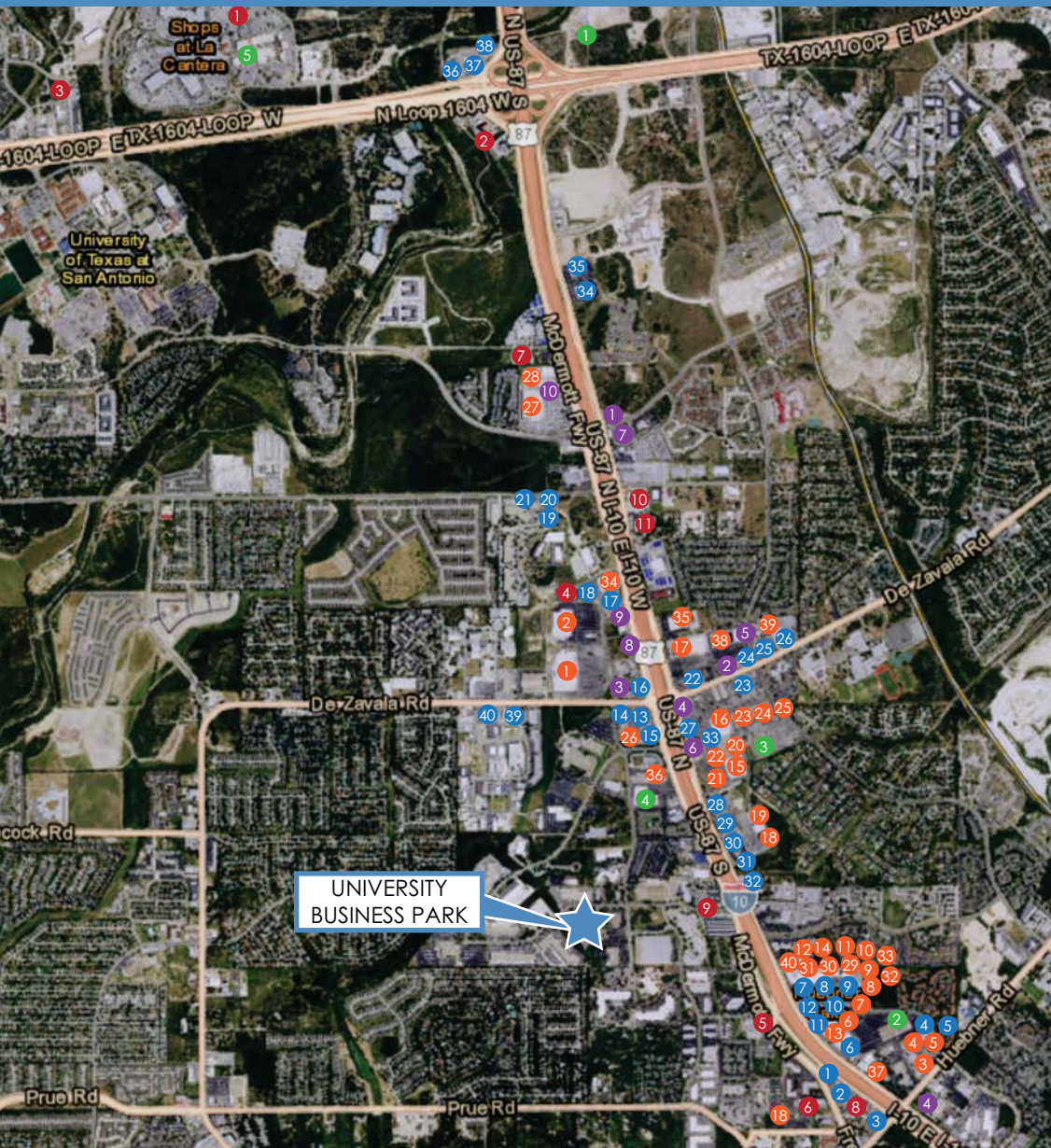
Rob Gish
210.805.3370
rob@worthsa.com



UNIVERSITY PARK BUSINESS CENTER

5750 Northwest Parkway • San Antonio, TX 78249

AMENITY MAP



RESTAURANTS

- | | |
|-----------------------------|-------------------------------|
| 1 Cracker Barrel | 21 Espana Bar De Tapas |
| 2 Bill Miller | 22 McDonalds |
| 3 Jims Restaurant | 23 Five Guys Burger and Fries |
| 4 Luce Ristorante E Enoteca | 24 Burger King |
| 5 Flying Saucer | 25 Wendys |
| 6 Pericos | 26 Chick Fil A |
| 7 Panera Bread | 27 Taco Cabana |
| 8 Fire Wok | 28 Outback Steakhouse |
| 9 California Pizza Kitchen | 29 Carrabbas Italian Grill |
| 10 Saltgrass Steakhouse | 30 Logan's Roadhouse |
| 11 Romanos Maccaroni Grill | 31 Chili's |
| 12 La Madeline | 32 Joe's Crabshack |
| 13 Ihop | 33 Starbucks |
| 14 Einsteins Bros Bagel | 34 Cheddar's |
| 15 HuHot Mongolian Grill | 35 Chuy's |
| 16 Whataburger | 36 Olive Garden |
| 17 Matamoros Restaurant | 37 Red Lobster |
| 18 Zios Italian Kitchen | 38 Longhorn Steakhouse |
| 19 Sapporo Sushi | 39 Culvers |
| 20 Picnicks | 40 Buffalo Wild Wings |

RETAIL

- | | |
|------------------------|------------------------|
| 1 Wal Mart | 21 Office Max |
| 2 Sam's Club | 22 La Z Boy Furniture |
| 3 Birkenstock | 23 Petco |
| 4 New Balance | 24 Stein Mart |
| 5 Half Price Books | 25 Party City |
| 6 REI | 26 Good Sports |
| 7 Ann Taylor | 27 Rooms To Go |
| 8 Banana Republic | 28 Costco |
| 9 Talbots | 29 Ross Dress for Less |
| 10 Bed Bath and Beyond | 30 Lenscrafters |
| 11 Pier 1 Imports | 31 Gymboree |
| 12 Old Navy | 32 Game Stop |
| 13 Gap | 33 Eddie Bauer |
| 14 Jos. A. Bank | 34 Ethan Allen |
| 15 Target | 35 Havertys |
| 16 HEB | 36 Americus Diamond |
| 17 Home Depot | 37 Louis Shanks |
| 18 Golds Gym | 38 PetSmart |
| 19 Ashley Furniture | 39 Specs |
| 20 Marshalls | 40 Bath and Body Works |

BANKS

- 1 Wells Fargo
- 2 BBVA Compass
- 3 Bank of America
- 4 Chase Bank
- 5 Frost Bank
- 6 Security Service Federal Credit Union
- 7 United SA Federal Credit Union
- 8 Firstmark Credit Union
- 9 San Antonio Credit Union
- 10 Randolph Brooks Federal Credit Union

HOTELS

- 1 La Cantera Resort
- 2 Drury Inn & Suites
- 3 Four Points by Sheraton
- 4 Holiday Inn
- 5 Springhill Suites
- 6 Towneplace Suites
- 7 La Quinta Inn and Suites
- 8 Quality Inn
- 9 Studio 6
- 10 Best Western
- 11 Super 8

ENTERTAINMENT

- 1 Top Golf
- 2 Huebner Oaks Theater
- 3 Fiesta Theater
- 4 University Bowl
- 5 The Shops at LaCantera



WORTH

& ASSOCIATES

7373 Broadway, Suite 201 • San Antonio, TX 78209
210.822.5220 • Fax 210.822.5224 • www.worthsa.com

CONTACT: Rick Littleton
210.805.3380
rickl@worthsa.com

Rob Gish
210.805.3370
robgs@worthsa.com