



# BROOKHOLLOW BUSINESS CENTER

1077, 1355 Central Parkway South • San Antonio, TX 78232  
14220 Northbrook • San Antonio, TX 78232



WORTH  
& ASSOCIATES

# BROOKHOLLOW BUSINESS CENTER

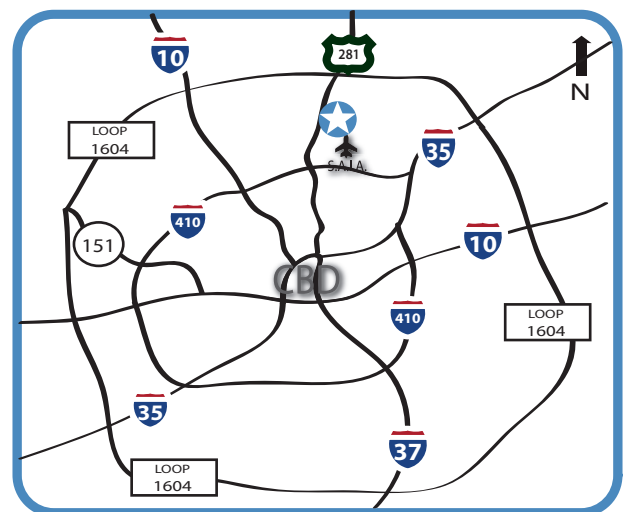
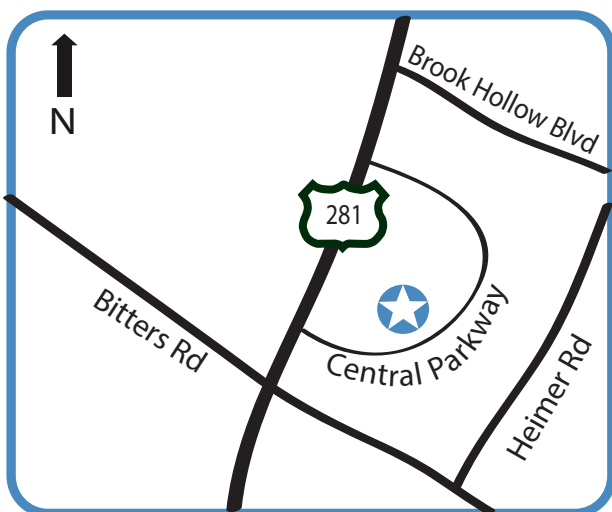
## PROPERTY INFORMATION

- Brookhollow Business Center is a Flex Office/Service Center Project Consisting of Three Buildings (185,222 SF)
- 3.5 to 5/1000 Parking Ratio
- 16' - 18' Clear Height
- Dock and Grade Level Loading Doors
- Building & Monument Signage
- Secure After Hours Gate Access
- Excellent Ingress/Egress to U.S. 281
- Great North Central Location within Close Proximity to San Antonio International Airport, U.S. 281 and Wurzbach Parkway
- Close to many Restaurants, Hotels, Retail and other Area Amenities



### AVAILABLE SPACE

- Suite 600B - 6,144 SF
- Suite 700B - 5,780 SF
- *Suite 600/700B - 11,924 SF*

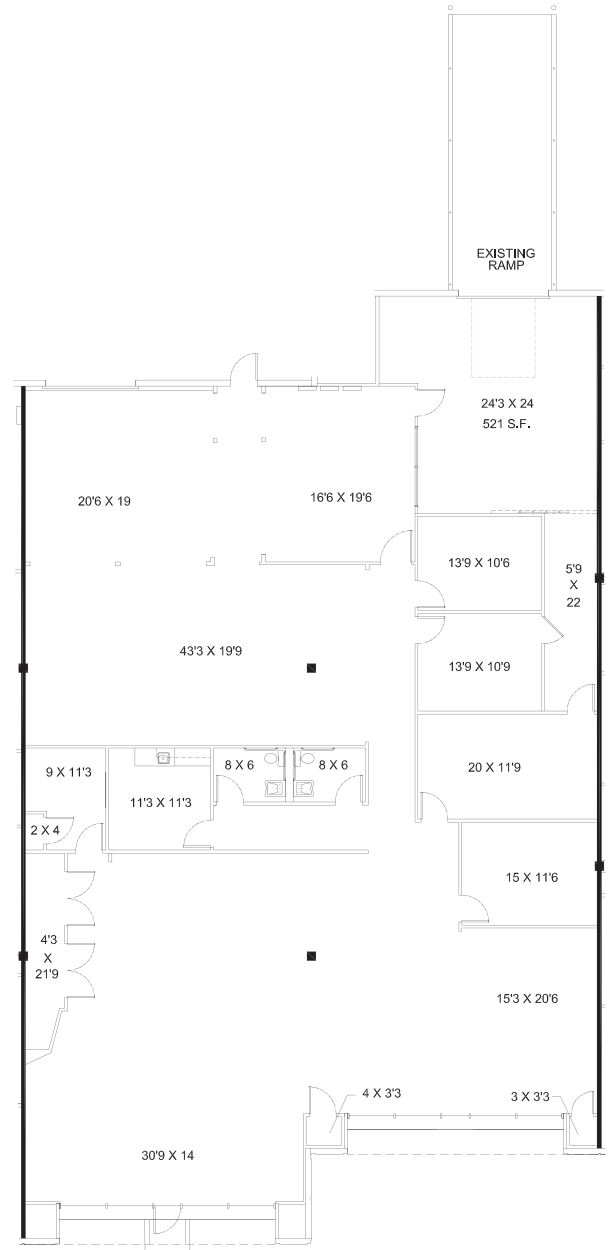
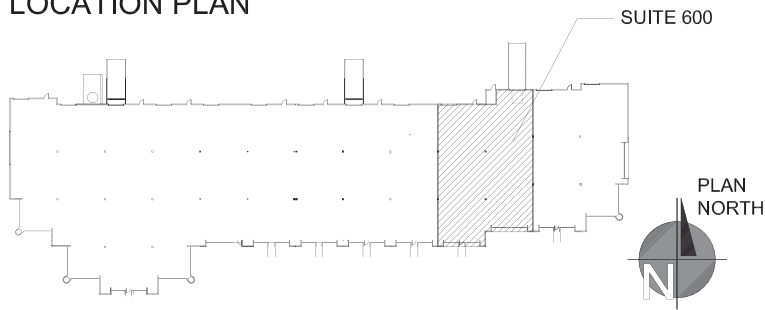


# BROOKHOLLOW BUSINESS CENTER

# SPACE PLAN SUITE 600B

SUITE 600B: 6,144 SF

LOCATION PLAN

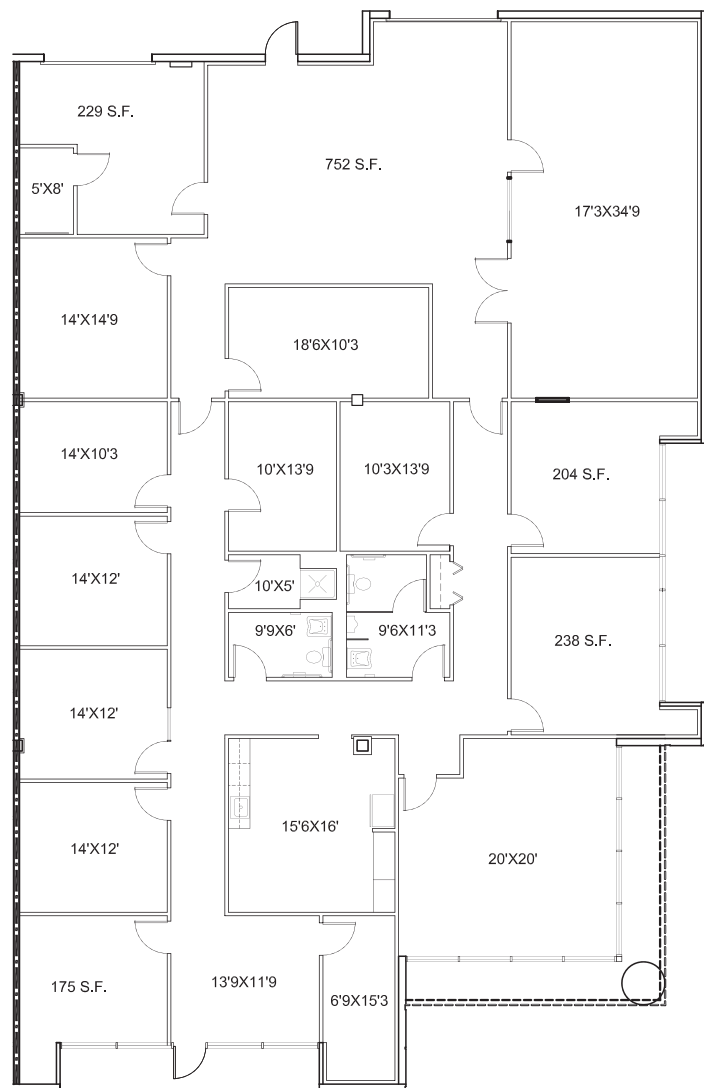
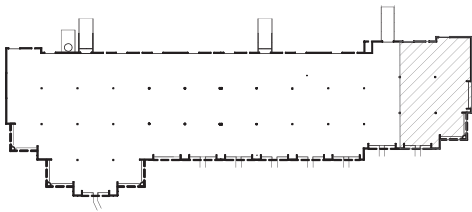


# BROOKHOLLOW BUSINESS CENTER

# SPACE PLAN SUITE 700B

SUITE 700B: 5,780 SF

LOCATION PLAN



# BROOKHOLLOW BUSINESS CENTER

# PROJECT PHOTOS

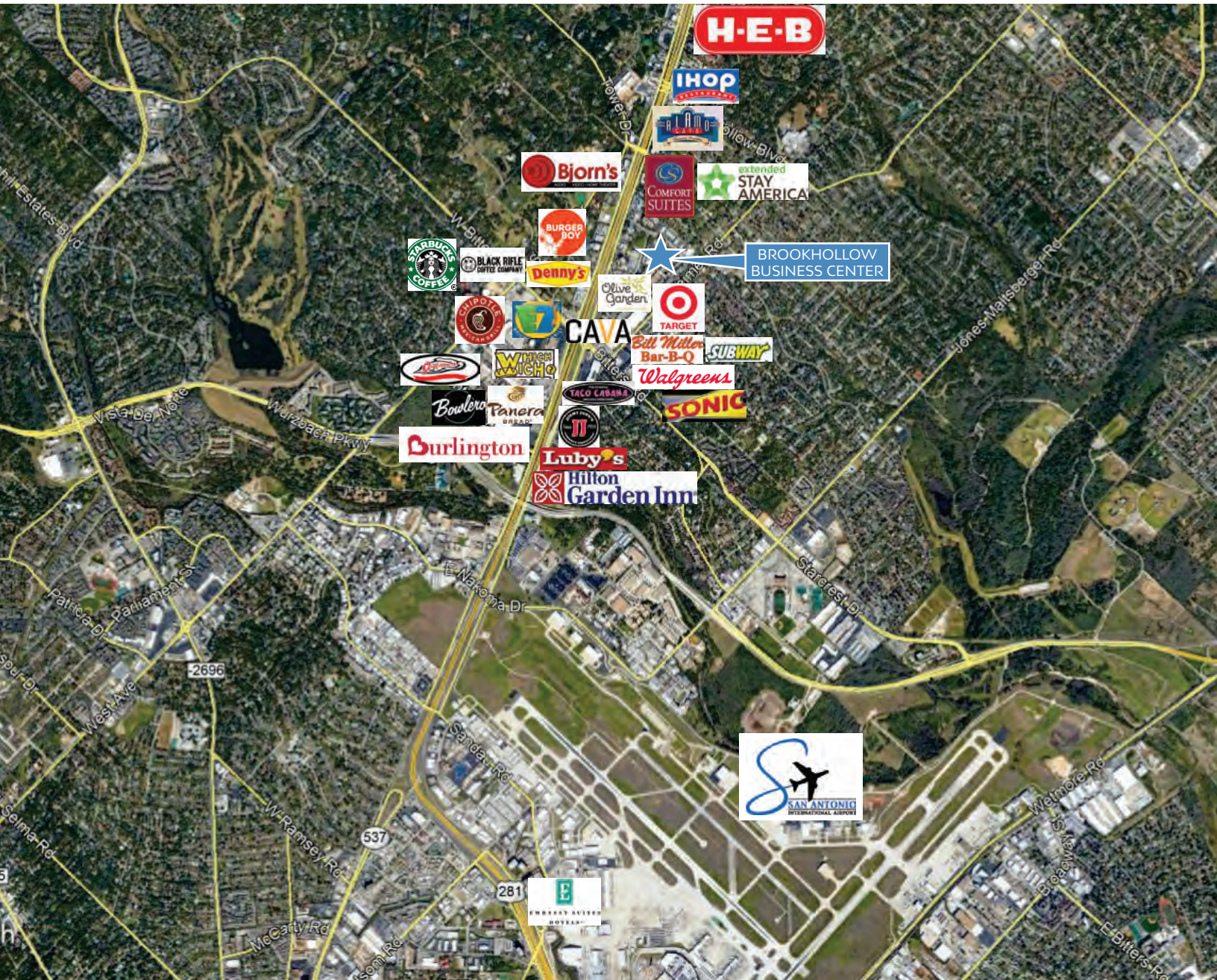


CONTACT: Rob Gish  
210.805.3370  
rob@worthsa.com



# BROOKHOLLOW BUSINESS CENTER

# AMENITY MAP



WORTH  
& ASSOCIATES

CONTACT: Rob Gish  
210.805.3370  
robg@worthsa.com

7373 Broadway, Suite 201 • San Antonio, TX 78209  
210.822.5220 • Fax 210.822.5224 • www.worthsa.com